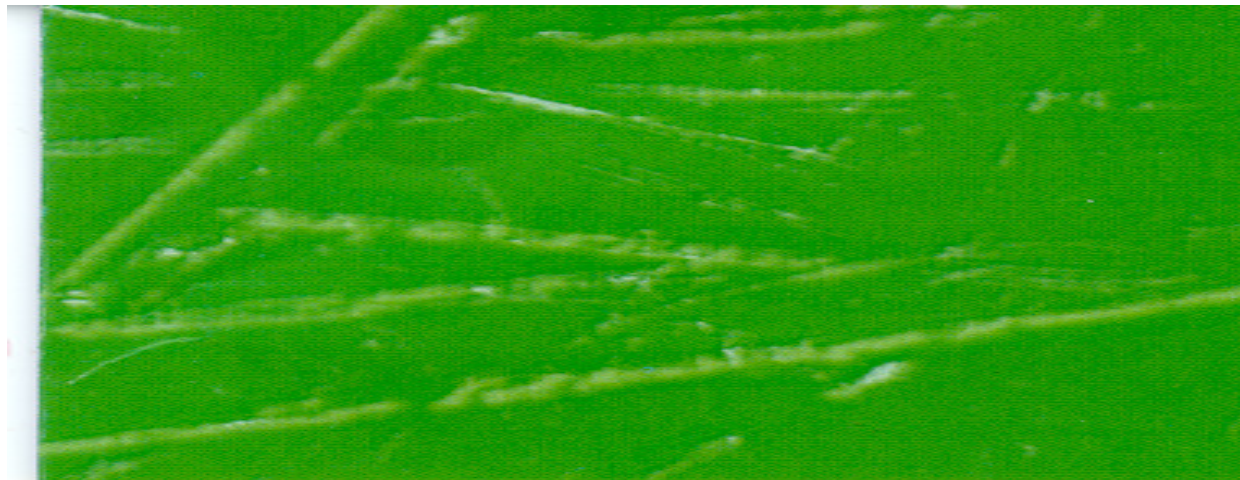
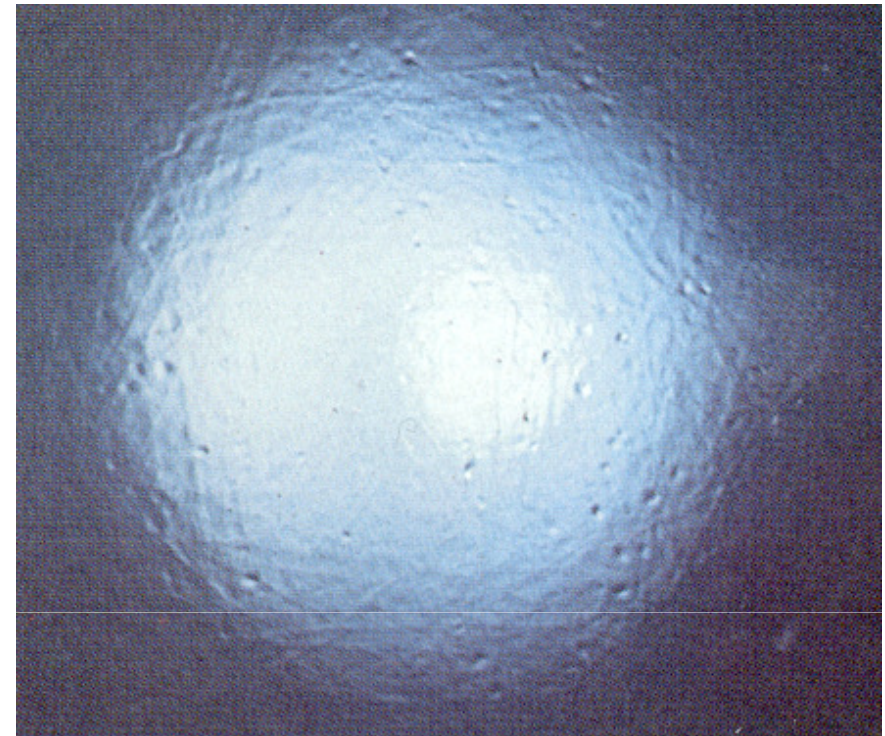


Bilder zur EFD-Info Nr. 506

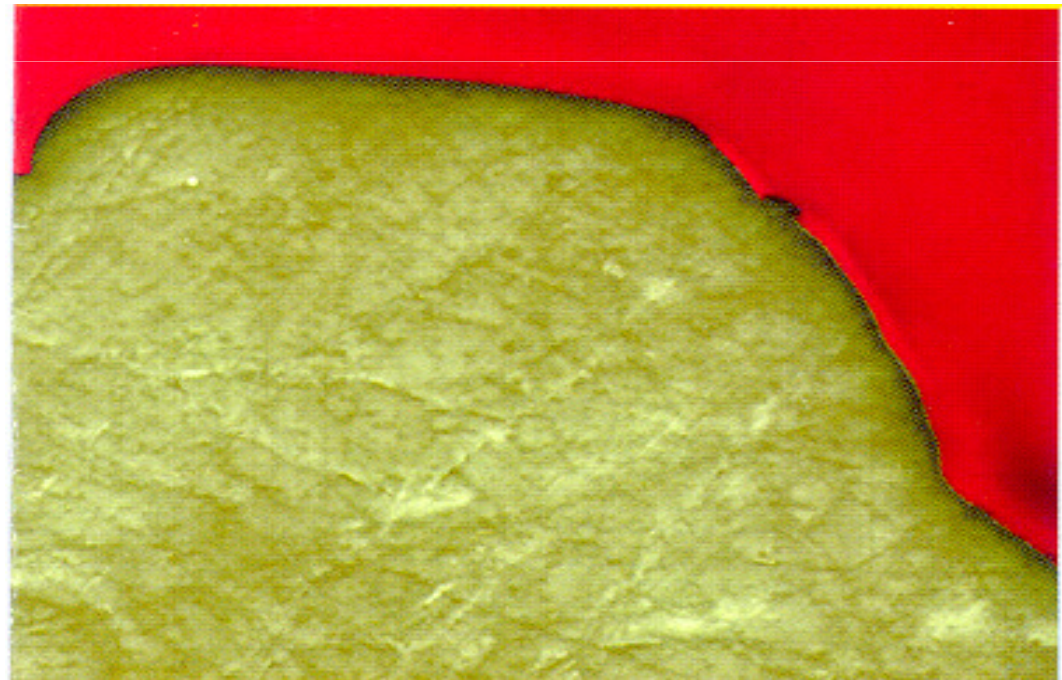
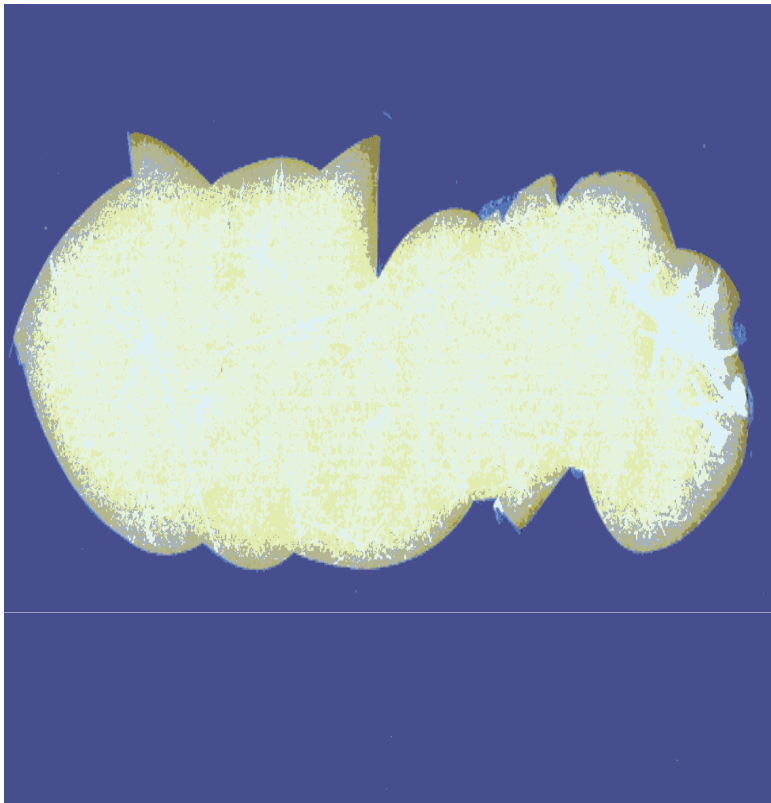
Checkliste für eine problemlose Verarbeitung von Gelcoat



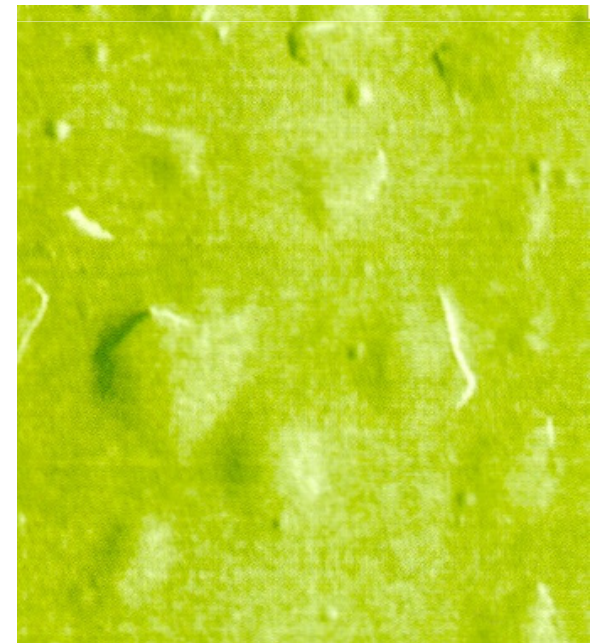
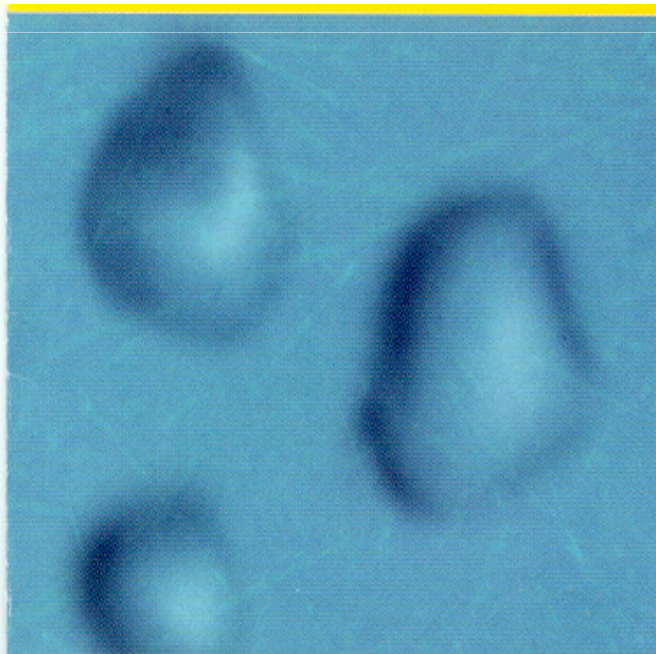
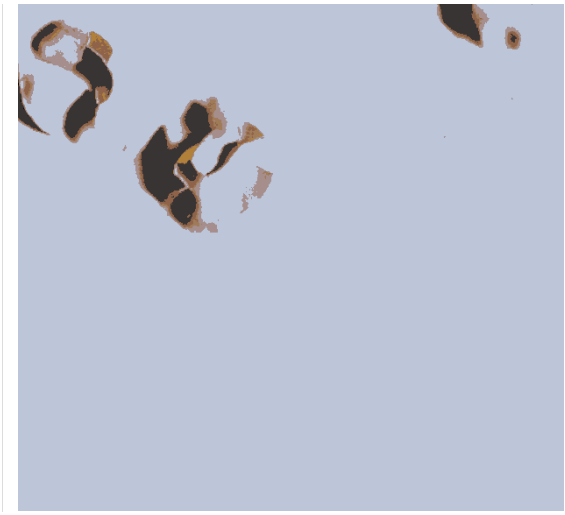
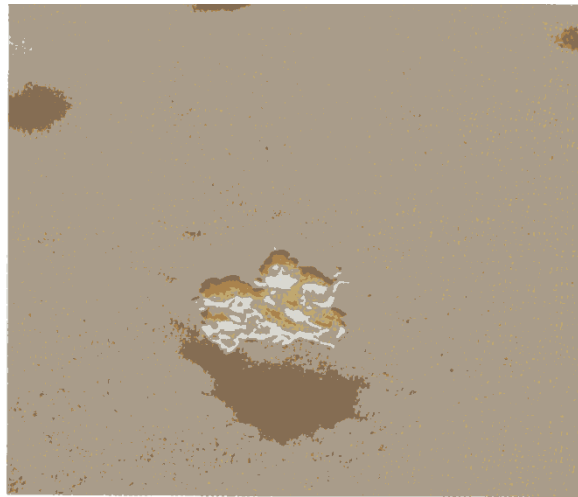
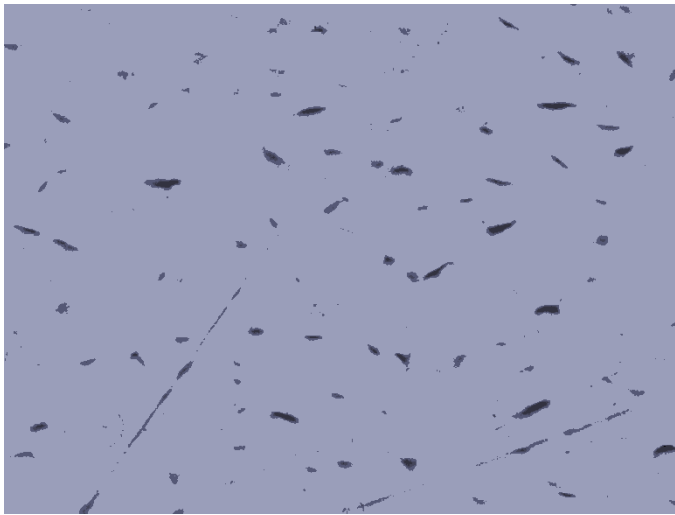
1. Faserzeichnung



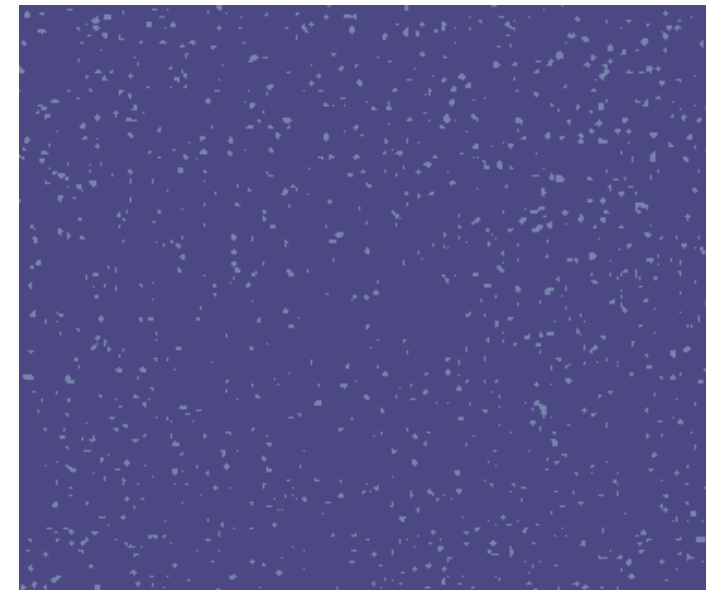
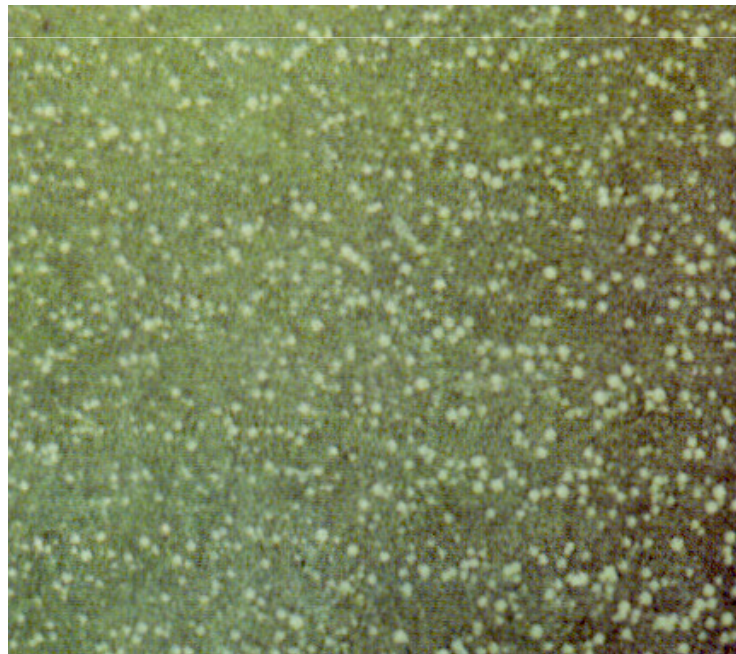
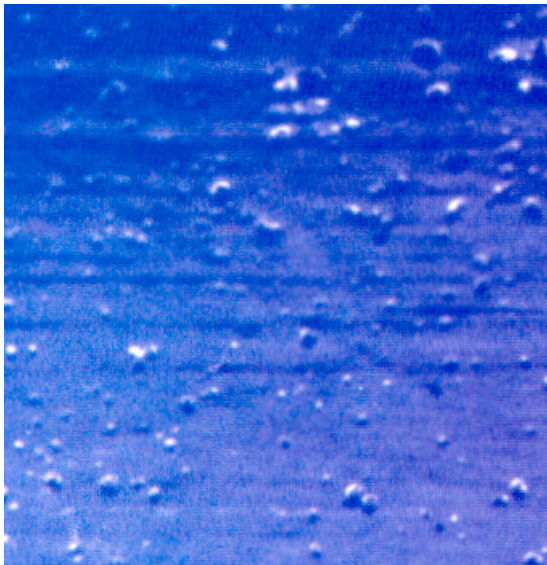
2. Abblättern des Gelcoat

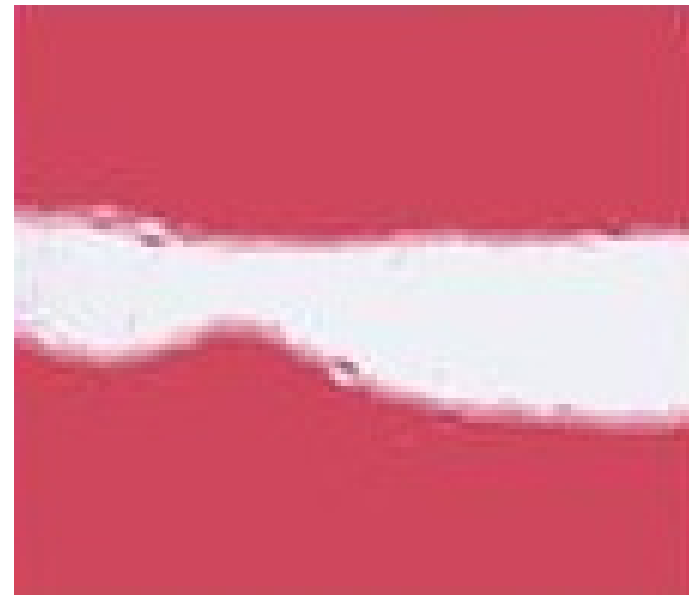
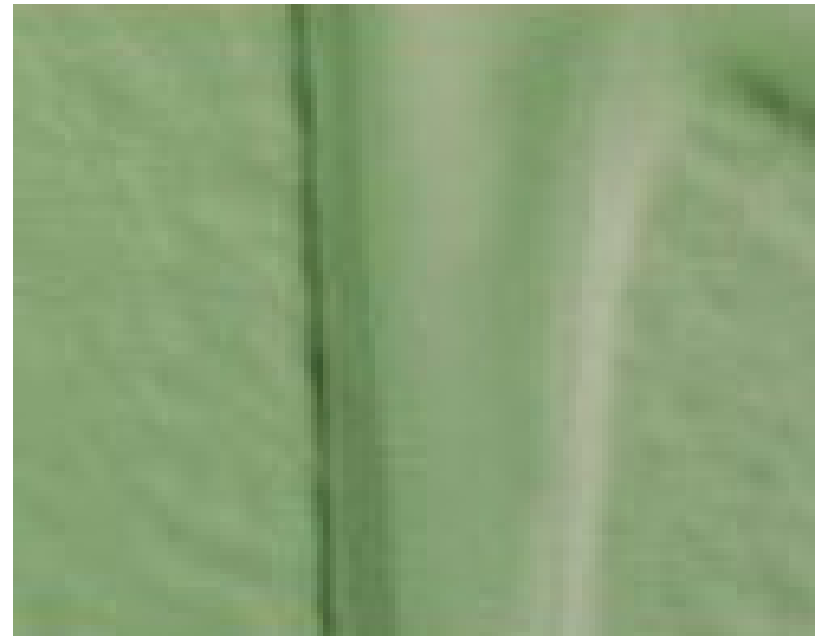


3. Blasenbildung

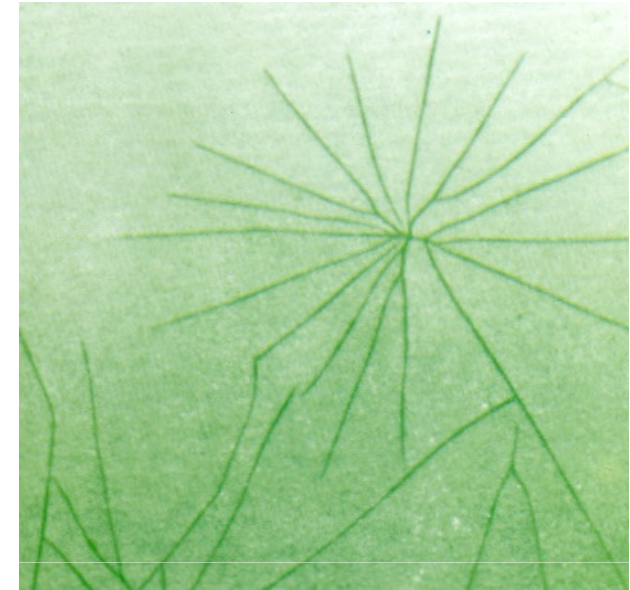
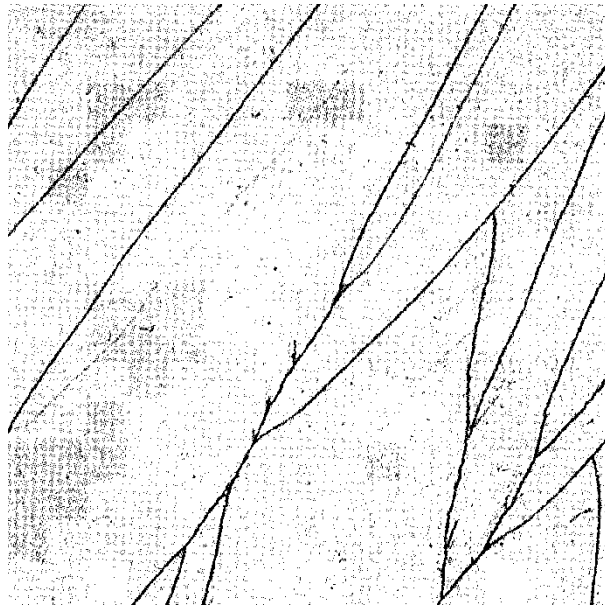


4. Löcher, Nester, Nadelstiche



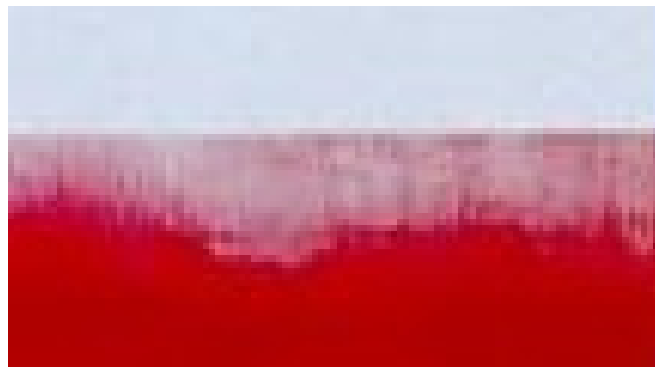
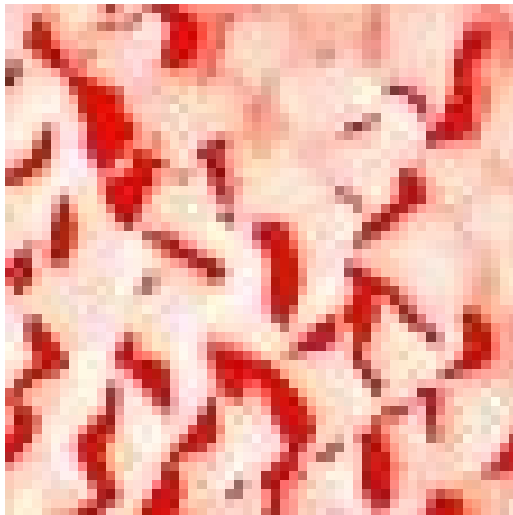
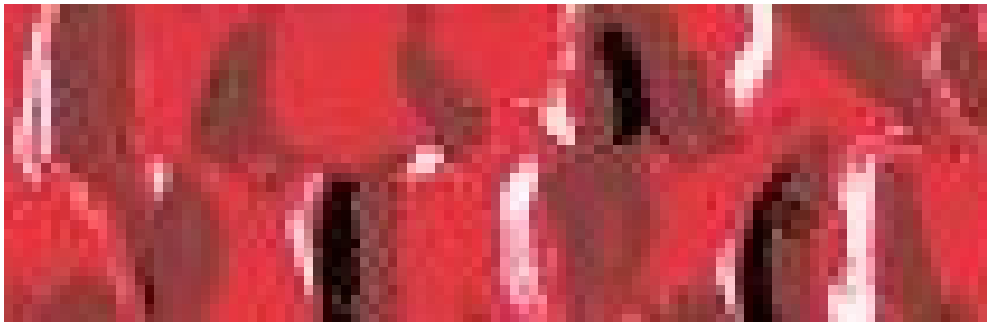


6. Risse



Durelastic Oberflächenlösungen für Composites - Bilder zur Checkliste für eine problemlose Verarbeitung von Gelcoat

13. Fettige Oberfläche, Elefantenhaut, Orangenhaut



14. Zu geringer Glanz

